

# nitolic® | INSTRUCTION FOR USE

NITOLIC® Head Lice and Nits treatment KIT – treats lice infestation (*Pediculus humanus capitis*).

## HOW IT WORKS:

- kills all active developmental stages of head lice
- kills lice eggs (nits)
- makes it easier to comb out lice and nits



Always read the instructions before use. For effective treatment please follow the instructions below:

- Keep these instructions for future use.
- Use only as directed and follow the directions in these instructions.
- If you have any further questions consult a physician.
- If any adverse reaction occurs, discontinue use and consult your physician.



## USEFUL INFORMATION regarding head lice (*Pediculus humanus capitis*) and NITOLIC® liquid treatment.

The head louse is a small (2.0 to 4.7 mm), wingless insect with a flattened profile. Head lice range in colour from yellowish-white to dark brown and tend to match the colour of the host's hair. Head lice feed on human blood several times a day and live close to the human scalp. They move about by clinging to the hair with three pairs of claw-like legs. The adult head louse breathes through 7 paired spiracles on the thorax and abdomen.



**NITOLIC® liquid treatment spreads quickly and evenly on the scalp, tightly covering lice (o-effect technology®). By filling the spiracles of lice, it quickly eliminates them.**

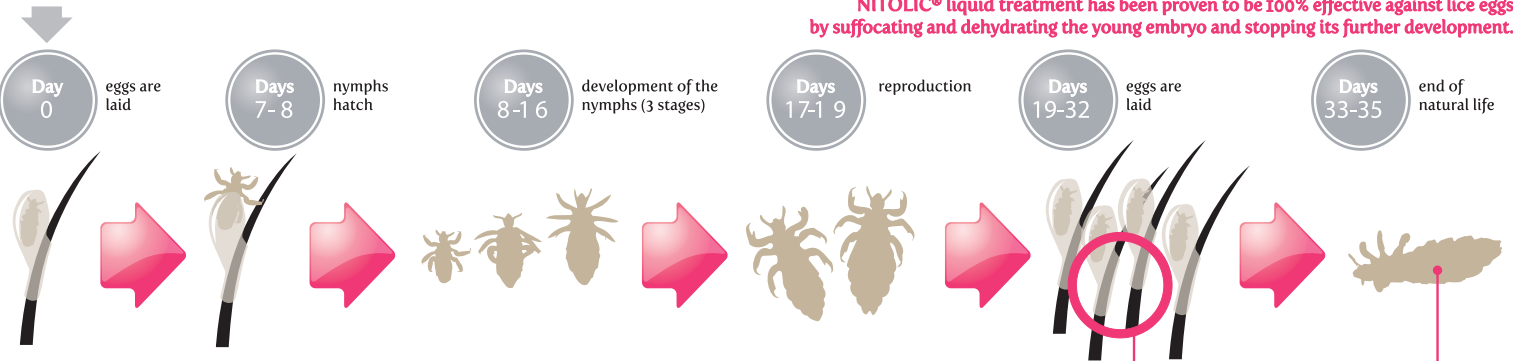


**o-effect technology®**

**100% efficacy against all developmental stages of head lice and eggs**

The key characteristic of this medical device for head lice treatment is the quick and even spreading on the scalp and hair provided by o-effect® technology.

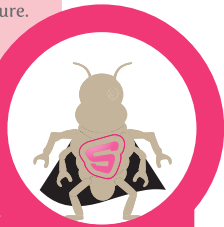
## LIFE CYCLE OF THE HEAD LICE



## HEAD LICE RESISTANCE AND THE NITOLIC® LIQUID TREATMENT

Head lice have developed resistance to traditional insecticides that act by disrupting their physiological processes, which results in treatment failure. The mechanical blockage of the louse's breathing apparatus, the concept on which NITOLIC® liquid treatment is based, eliminates the possibility of lice becoming resistant to this specific treatment.

**The new generation of lice so called - Super Lice,** is much harder to kill due to the developed genetic resistance against the commonly active substances used in many popular head lice products. NITOLIC® technology offers a mechanism of killing and eliminating lice and their eggs without the likelihood of encountering genetic resistance. It does not contain any pesticides, which Super Lice are resistant to and therefore it is effective against them.



Eggs are laid by the female louse to the base of the hair near the scalp and they are firmly cemented to the hair.

A louse's life cycle is ca. 40 days, although it cannot normally stay outside the human head for more than 24-48 hours.



**NITOLIC® removal comb helps remove lice and eggs (nits) after treatment.**



## DIRECTIONS FOR USE

### IMPORTANT HINTS

To provide complete lice elimination and avoid a re-infestation, the treatment needs to be administered at the same time to all members of the family who could have an infestation. Head lice treatment should be performed in good lighting. It is important to apply the treatment from the scalp to the ends of the hair. For effective treatment apply NITOLIC® liquid treatment thoroughly to the entire scalp and hair. First apply behind the ears, to the back of the neck, around the hair on the neck and around the hair-line.



In case of long hair, divide the hair into four sections – from the front to the back and from ear to ear.



Apply NITOLIC® liquid treatment thoroughly on dry hair to the entire area of the scalp and hair, starting from the root to the end of the hair. First apply behind the ears, to the back of the neck and on dry hair.



Saturate the hair and scalp with NITOLIC® liquid treatment to ensure that all lice and nits are completely covered.



After treatment, put a shower cap on your head for **1 hour**. (CAUTION! Please observe the guidelines and exposure time carefully).



Remove the shower cap and wash your hair with water and shampoo.



Remove the lice and nits from your hair using NITOLIC® removal comb.



### COMBING HINTS

Divide long hair into sections and pin each section. Lift a small section of hair from the bigger section to make the scalp visible. Begin combing through strands carefully, dragging NITOLIC® removal comb firmly from the root to the ends of the hair. Pin back the strand you have finished combing. Wipe eggs and nits from the teeth of the NITOLIC® removal comb with a tissue.



If you have any further questions, consult a physician.



## IMPORTANT INFORMATION

- NITOLIC® liquid treatment has proven that even a single use of this device provides 100% efficacy against all active developmental stages of head lice including nits, with no requirement to repeat the treatment.
- The most common way of getting head lice is to come into contact with somebody who already has the condition, thus a re-infestation may occur, e.g. in nursery or at school. It is important to inspect hair for lice carefully and regularly, at least once a week.
- NITOLIC® Head Lice and Nits treatment KIT is a multiple use medical device. Unlike other head lice products, thanks to its specific mode of action, it eliminates the possibility of head lice becoming resistant to the treatment.
- NITOLIC® liquid treatment causes the head lice eggs (nits) to dehydrate, thus resulting in a clicking sound when squeezed. Comb out lice eggs (nits) thoroughly after treatment.
- For more information concerning head lice treatment with NITOLIC® with removal comb, please visit [www.nitolic.us](http://www.nitolic.us)



## INFORMATION ABOUT THE APPLICATION

### WARNINGS

- Use only as directed, follow the directions in these instructions.
- Avoid getting NITOLIC® liquid treatment in the eyes, or inside the mouth, nose or throat. In case of contact with eyes, rinse for 10 to 15 minutes with plenty of water. If irritation persists, consult a physician.
- NITOLIC® liquid treatment is for external use only. Do not apply to cuts, wounds or irritated skin.
- Before using NITOLIC® liquid treatment, apply a small amount of NITOLIC® liquid treatment to your palm to check for any adverse reaction.
- Use treatment on children only under the direct supervision of an adult.
- Floors will become slippery if they come into contact with the medical device. Wipe up spills immediately.
- This medical device may react to certain hair care and hair tinting lotions.

### CONTRA-INDICATIONS

- Do not use if allergic to any of the ingredients in NITOLIC® liquid treatment.
- Do not apply NITOLIC® liquid treatment to cuts, wounds or irritated skin.
- Do not use NITOLIC® liquid treatment after the expiry date shown on the pack.
- Do not use on children under 2 years of age.

### POSSIBLE SIDE EFFECTS

The following side effects may occur: irritation, redness and skin swelling. In the unlikely event that such symptoms occur, stop using NITOLIC® liquid treatment immediately and contact a physician.



## MEDICAL DEVICE DETAILS

**STORAGE**  
Store at room temperature.

SEE  
THE LABEL



**MANUFACTURER**  
ICB PHARMA Tomasz Świątosławski, Paweł Świątosławski Spółka Jawna  
6a Moździerzowców St. 43-602 Jaworzno Poland



WE ARE COMMITTED TO YOUR SATISFACTION ON THIS PRODUCT. SHARE YOUR OPINION WITH US AT:

@ [info@icbpharma.pl](mailto:info@icbpharma.pl)

